

ASCI Ballot

Council leadership, 2021

Vote item 1:

Vice President (term of office, 2021-2025)

Make 1 choice.

Benjamin D. Humphreys, MD, PhD

[View profile](#)



The pandemic reminds everyone of the critical importance of a vibrant physician scientist workforce. The successful development of vaccines in less than a year, with one team led by our own Dr. Dan Barouch, is an inspiring testament to the power of science and medicine to improve human health. I am honored to be considered for the position of ASCI Vice President. My priorities include: 1) developing new mechanisms to support early career physician scientists including through philanthropy; 2) asserting and advocating for the value of physician scientists to academic and federal institutions and the public; and 3) promoting diversity of representation among our members.

I believe that my experience as a mentor, clinician, scientist, Division Chief and current ASCI Secretary Treasurer prepares me well to achieve these goals. As director of our T32 and mentor to twelve physician scientists at both the graduate and postgraduate levels, I am aware of the challenges faced by the current generation. My training at CWRU and MGH and as faculty at Brigham and Women's Hospital and now Washington University in St. Louis have provided me with a deep appreciation of the value, but more importantly the vulnerability, of early career physician scientists across institutions. As Secretary Treasurer I have gained important strategic and operational insight. I am profoundly optimistic about the future for physician scientists across disciplines and the roles ASCI will play in advocating support for their mission. It would be my great privilege to serve our society.

Nima Sharifi, MD

[View profile](#)



There is no organization more important than the ASCI for setting the tone and culture for physician-scientists who in turn make the major discoveries that define the future of medicine. Although our opportunities are clear, we face major challenges related to the practicalities of straddling the two adjoining worlds of science and medicine.

If I were honored with the opportunity to serve as the ASCI Vice President, my efforts would focus on removing obstacles that obscure the path for physician-scientists to do what we are best at doing, which is advancing our discoveries. There are several areas of emphasis that are necessary for this mission: 1) Mentorship goes to the heart of these efforts to advise our junior colleagues and keep the physician-scientist pipeline intact. 2)

Public engagement is required to maintain societal support for our unique perspective and value. 3) Diversity and representation are essential for many reasons, including ensuring that the ASCI is a home for a wide array of voices and that it remains cognizant of societal needs.

As an oncologist and Kendrick Family Chair for Prostate Cancer Research at Cleveland Clinic, my most intense research focus is on how aberrations in normal endocrine physiology enable pathologic processes that occur

across clinical disciplines in medicine, surgery and pathology. I mentor and advise trainees and junior faculty from an array of clinical disciplines and I see the challenges they face. I pledge to serve the ASCI in the same spirit. Thank you for considering my candidacy.

Vote item 2:

Councilor (term of office, 2021-2024)

Make up to 3 choices.

Julie Anne Bastarache, MD

[View profile](#)



I am delighted to be considered for election to ASCI Council and would be honored to serve the society in this role. I am a Pulmonary and Critical Care translational physician scientist with a focus on mechanisms that drive acute lung, brain and kidney injury in sepsis and critical illness. As my research has expanded from a focus on the lung to non-pulmonary organs, I increasingly value the creative power of cross-disciplinary collaborations. The COVID pandemic has placed many of us into collaborative teams with unfamiliar clinicians and scientists. I want to carry that collaborative spirit forward as the pandemic wanes; the ASCI is a fertile field in which to do so. COVID has also highlighted the vulnerability of early career physician-scientists, many of whom are struggling. As the

fortunate recipient of superb mentorship and support throughout my career, I am dedicated to improving mentorship and career development locally and nationally with a goal of developing a vibrant and diverse physician scientist workforce. My current leadership roles at Vanderbilt as Co-Director of the Neilson Society for Faculty Development and Associate Program Director for Internal Medicine Residency Research along with positions on the NHLBI MCBS(K) Study Section and as Associate Editor for the American Journal of Physiology-Lung Cellular and Molecular Physiology have exposed me to many early career physician scientists. With my ongoing involvement in these scientific and career development activities and my high enthusiasm for the physician scientist career path, I am ready to contribute to the ASCI as Councilor.

Krzysztof Kiryluk, MD, MS

[View profile](#)



I am honored to be considered for this position. As a physician-scientist, I research genetic mechanisms of complex traits in humans, with a special focus on kidney disease. I work with interdisciplinary teams of scientists with computational, statistical, genetic, and biology backgrounds. Some of the diseases of interest are uncommon, thus I collaborate broadly with colleagues around the world, including from Europe, Asia, and both Americas. These experiences expose me to some of the problems faced by our global community today, including shrinking numbers of physician-scientists, restricted funding, or diminished public support.

Some of these problems became obvious recently in the face of an unprecedented challenge posed by the global pandemic. We have witnessed widespread misinformation and public distrust in science and medicine. At the same time, the response of our community has been remarkable, highlighting the critical role that physician-scientists play in our society. I participated in the global efforts to understand host genetic susceptibility to COVID-19, and I was inspired by how our community pushed the needle in terms of speed, scale, and transparency of genetic discovery.

As a Council member, I will strongly advocate for science and technology in the US and globally. I will work on increasing public visibility of physician-scientists, global awareness of our work, and a louder voice with the national and international lawmakers. I will advocate for early-career scientists, increasing institutional and

government support, promoting international collaboration models that empower scientists in low resource settings, and for increasing growth, health, and diversity of our physician-scientist community.

Ross L. Levine, MD

[View profile](#)



I am truly honored to be considered for a position as an ASCI Councilor. As a physician scientist focused on the pathogenesis and therapy of hematopoietic malignancies, our science has always been at the interface of discovery and clinical translation, and I am keenly aware of the importance physician scientists play in making fundamental discoveries and in translating science to benefit our patients. I have a deep commitment to mentoring the next generation of physician scientists, as exemplified in my institutional roles as Chief of the Molecular Cancer Medicine Service within HOPP at MSK and as a member of the Tri-I Institutional MD-PhD Executive Committee.

There has never been a greater moment for scientific discoveries to have substantive clinical impact, and never a greater need. The pace of scientific discovery and the expanding set of translational tools have created an ideal landscape for physician scientists to lead the way to improving the world around us. However, there have never been greater challenges for physician investigators to achieve their career and scientific goals, even more so during the pandemic. I am honored to be considered for this position because of my commitments to mentoring the next generation, to broadening and strengthening the physician scientist community, and to solutions aimed at removing barriers in career development and to providing more support for physician investigators. There is no greater time or need for our collective efforts, and ASCI has a critical, catalytic role in helping science and scientists have the greatest clinical impact.

Goutham Narla, MD, PhD

[View profile](#)

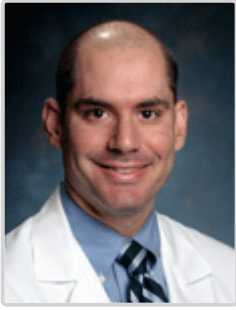


I am the Division Chief of Genetic Medicine at the University of Michigan and a Professor of Medicine at Michigan Medicine. My lab focuses on the study of the structural and molecular basis for tumor suppressor gene inactivation in cancer. Specifically, my laboratory is focused on understanding the structural and molecular mechanisms by which the serine/threonine phosphatase PP2A is inactivated in human cancer and then leveraging these insights into the development of first-in-class small molecule activators of this phosphatase for the treatment of human diseases. The translation of this work is led by RAPPTA Therapeutics, a company supported by the Novartis Venture Fund, Novo, and Advent Life Sciences. Clinically, I oversee the care of high risk cancer and medical

genetics patients across the Michigan Medicine health care system. Importantly, I serve as the associate director for the MSTP program and I have a long-standing interest in mentorship and career development of trainees. I started the Young Scientist Foundation with late Chef Floyd Cardoz to support under-represented high school students to have laboratory research experiences during their summers. As a member of the ASCI, I have worked with past ASCI president Vivian Cheung and HHMI to organize the food and science evening for trainees at the annual ASCI meeting. I am deeply committed and interested in potentially serving on the ASCI council to further support our outreach to expand and make more inclusive opportunities to become a physician scientist and to serve our scientific and medical communities.

Steven M. Rowe, MD, MSPH

[View profile](#)



I would be honored to serve as an ASCI Council member, and view supporting the role of physician researchers in academia and beyond as a major priority for service on the Council. The organization must help assure a robust pipeline of physicians who perform research, among the most rewarding careers in medicine, but also one with evolving challenges and threats. Through experience as our ASCI institutional representative, I have sought continued opportunities to advocate for the organization via outreach to physicians-in-training, including partnership with APSA to identify and address barriers to building a successful physician-scientist career and attracting and retaining the best and brightest individuals. Selfless mentorship, something I experienced first-hand and foster through

committed personal mentorship that is complemented by training programs we collaboratively developed at our center, is a bedrock for strengthening the pipeline of new ASCI members and healthy growth of our society. I see continued opportunities to foster best-practices and innovative mentorship techniques through member outreach. This should be combined with facilitating a variety of training opportunities for physician-scientists to emerge in the competitive scientific environment. Proactively sponsoring physician-scientists from a diverse range of backgrounds, which strengthen the organization and our scientific perspectives, must be incorporated in practice, as I have attempted to do through mentorship of women and under-represented minorities. Ultimately, I hope my communication skills, leadership qualities, and range of experience strengthen the organization's goal of fostering the career path of physician-scientists and clinical researchers, enabling impactful discoveries that directly benefit our patients.

Elizabeth K. Speliotes, MD, PhD, MPH

[View profile](#)



I am honored to be considered for ASCI Council. I am a physician scientist, the Keith Henley Professor of Gastroenterology and a Tenured Associate Professor of Internal Medicine and Computational Medicine and Bioinformatics at the University of Michigan. We carry out large scale genomic studies of obesity and nonalcoholic fatty liver disease to identify genetic variants that predispose to disease and define disease subtypes. We target candidate variants/genes to create cell and animal models of disease which we use to define their mechanism of action and to screen for therapeutics. As a practicing gastroenterologist/hepatologist, I design and implement clinical interventions based on our findings to improve patient care. I am grateful for the training I have gotten which allows

me to go from bench to bedside to population health and back and am working to pay it forward. I am the Associate Director of our Medical Scientist Training program and the Institutional Representative for the American Society for Clinical Investigation where I help physician scientists and trainees find (1) mentorship (2) advocacy (3) career development opportunities (4) personal and professional support (5) funding (6) protected time and (7) career satisfaction in whatever area they find most rewarding. I am committed to training and serving individuals from diverse backgrounds and lead multiple committees that have implemented policies that have improved URM representation in science and medicine. I serve on multiple national and international grant and journal article review panels where I can help support ASCI and physician scientists.
