



The **ASCI/AAP** *Joint Meeting*

American Society for Clinical Investigation
and
Association of American Physicians

April 24 – 26, 2009

The Fairmont Chicago
Chicago, Illinois

Meeting Program

FASEB

Joint Sponsorship for Continuing Medical Education

This activity has been planned and implemented in accordance with the Essential Areas and Policies of the Accreditation Council for Continuing Medical Education (ACCME) through the joint sponsorship of the Federation of American Societies for Experimental Biology and ASCI-AAP. The Federation of American Societies for Experimental Biology is accredited by the ACCME to provide continuing medical education for physicians.



www.the-asci.org



www.aap-online.org

www.jointmeeting.org

The ASCI/AAP Joint Meeting

Welcome to Chicago!



Special Events

ASCI Welcome Reception and ASCI Annual Dinner

Friday, April 24

6 – 9 p.m.

On Friday, April 24, at 6 p.m., the ASCI Welcome Reception brings together attendees of the ASCI/AAP 2009 Joint Meeting. This event will take place in the Imperial Ballroom foyer, and all attendees of the ASCI/AAP Joint Meeting are invited to attend. The ASCI Annual Dinner follows at 7 p.m. in the Moulin Rouge room. Tickets are \$60, supply is limited. The dinner will feature a talk titled, "Translational Research: Converting the Valley of Death into the Garden of Eden" by **Barry S. Collier, MD**, *The Rockefeller University*, and **Robert M. Califf, MD**, *Duke Clinical Research Institute*.

AAP Reception and Dinner

Saturday, April 25

7 – 10 p.m.

On Saturday, April 25, the AAP Annual Reception and Dinner will be held in the Imperial Ballroom. The reception will begin at 7 p.m. in the Imperial Ballroom Foyer, followed by dinner at 8 p.m.

Paul Farmer, MD, PhD, *Harvard Medical School, Brigham and Women's Hospital*, will present, "Poverty and Sustainable Healthcare." This dinner is open to AAP membership and their guests only.



Scientific Program

Friday, April 24

Time	Event	Location
4:00 p.m. – 7:00 p.m.	Poster Setup	Imperial Ballroom
1:00 p.m. – 7:00 p.m.	Registration	International Ballroom Foyer
3:00 p.m. – 4:00 p.m.	Young Investigator Reception	International Ballroom Foyer
3:30 p.m. – 4:00 p.m.	ASCI Business Meeting (All ASCI Members Welcome)	International Ballroom
4:00 p.m. – 6:00 p.m.	Opening Plenary Session: BASIC STEM CELL BIOLOGY Chairs: Jon Epstein, MD and Francis S. Collins, MD, PhD	International Ballroom
4:00 p.m. – 5:00 p.m.	Patient-Specific Pluripotent Stem Cells George Daley, MD, PhD <i>Children's Hospital Boston</i>	
5:00 p.m. – 6:00 p.m.	Skin Stem Cells: Biology and Clinical Promise Elaine Fuchs, PhD <i>The Rockefeller University</i>	
6:00 p.m. – 7:00 p.m.	ASCI Welcome Reception	Imperial Ballroom Foyer
7:00 p.m. – 9:30 p.m.	Poster Viewing	Imperial Ballroom
7:00 p.m. – 9:00 p.m.	ASCI Annual Dinner Introduction of New Members Dinner Address: Translational Research: Converting the Valley of Death into the Garden of Eden Barry S. Collier, MD, The Rockefeller University Robert M. Califf, MD, Duke Clinical Research Institute	Moulin Rouge

Saturday, April 25

Time	Event	Location
7:00 a.m. – 5:00 p.m.	Registration	International Ballroom Foyer
7:00 a.m. – 8:00 a.m.	AAP Council Meeting (invited guests only)	State Room
7:00 a.m. – 8:15 a.m.	Mentoring Breakfast <i>Sponsored by the Doris Duke Charitable Foundation</i>	Moulin Rouge
7:00 a.m. – 8:30 a.m.	Continental Breakfast	International Ballroom Foyer
7:00 a.m. – 11:30 a.m.	Poster Viewing	Imperial Ballroom
8:30 a.m. – 11:30 a.m.	Plenary Session: TISSUE SPECIFIC STEM CELLS Chairs: Nancy C. Andrews, MD, PhD and Elliott Kieff, MD, PhD	International Ballroom
8:30 a.m. – 9:25 a.m.	Skeletal Tissue Engineering Michael T. Longaker, MD, MBA <i>Stanford School of Medicine</i>	
9:25 a.m. – 10:20 a.m.	Stem Cells, Progenitors and the Origins of Brain Tumors Rob Wechsler-Reya, PhD <i>Duke University Medical Center</i>	
10:20 a.m. – 10:35 a.m.	Break	International Ballroom Foyer
10:35 a.m. – 11:30 a.m.	Reversing Dysfunction of Aged Stem Cells Amy Wagers, PhD <i>Harvard Medical School</i>	
11:30 a.m. – 11:50 p.m.	ASCI/AAP Distinguished Public Service Awardee US Senator Arlen Specter (R-PA) A Call to Action to Accelerate Cures Introduction by Elliott Kieff, MD, PhD; President, AAP	
11:50 a.m. – 1:30 p.m.	Poster Presentations with Box Lunch <i>Sponsored by the University of Pennsylvania School of Medicine and the David Geffen School of Medicine at UCLA</i>	Imperial Ballroom
1:30 p.m. – 2:00 p.m.	Poster Dismantle	

Scientific Program

Saturday, April 25 (Continued)

Time	Event	Location
1:30 p.m. – 3:30 p.m.	Plenary Session: INNATE IMMUNITY Chairs: Jonathan Epstein, MD and Francis S. Collins, MD, PhD	International Ballroom
1:30 p.m. – 2:10 p.m.	Negative Regulation of TLR Response Shizuo Akira, MD, PhD <i>Japan Science and Technology Agency</i>	
2:10 p.m. – 2:50 p.m.	Innate Control of Adaptive Immunity Ruslan Medzhitov, PhD <i>Yale School of Medicine</i>	
2:50 p.m. – 3:30 p.m.	Gene Therapy Clinical Trial for LcA2 William H. Hauswirth, PhD <i>University of Florida, Gainesville</i>	
3:30 p.m. – 3:45 p.m.	Break	International Ballroom Foyer
3:45 p.m. – 5:05 p.m.	ASCI and AAP New Member Presentations Chairs: Nancy C. Andrews, MD, PhD and Elliott Kieff, MD, PhD	International Ballroom
3:45 p.m. – 4:05 p.m.	Toll Like Receptors, Dendritic Cells and the Modulation of Immunity Nina Bhardwaj, MD, PhD (AAP New Member) <i>New York University School of Medicine</i>	
4:05 p.m. – 4:25 p.m.	Programming Chromatin States by Long Noncoding RNAs Howard Y. Chang, MD, PhD (ASCI New Member) <i>Stanford University</i>	
4:25 p.m. – 4:45 p.m.	Elaborating “Druggable” Dependencies Linked to Genomic Alterations in Human Cancer Levi A. Garraway, MD, PhD (ASCI New Member) <i>Harvard Medical School and Dana-Farber Cancer Institute</i>	
4:45 p.m. – 5:05 p.m.	Next Generation of Gene Fusion Discovery in Cancer Arul M. Chinnaiyan, MD, PhD (AAP New Member) <i>University of Michigan Medical School</i>	
5:05 p.m. – 5:35 p.m.	AAP Presidential Address Physician-Scientist Creativity, Unknowns, and 3-legged Stools Elliott Kieff, MD, PhD <i>Harvard Medical School, AAP President</i>	International Ballroom
5:35 p.m. – 6:05 p.m.	ASCI Presidential Address Can We Keep ‘Academic’ in Academic Medical Centers? Nancy C. Andrews, MD, PhD <i>Duke University Medical Center, ASCI President</i>	International Ballroom
7:00 p.m. – 10:00 p.m.	AAP Reception and Dinner Dinner Address: Poverty and Sustainable Health Care Paul Farmer, MD, PhD <i>Harvard Medical School, Brigham and Women’s Hospital</i>	Imperial Ballroom and Foyer
10 p.m. to 11:30 p.m.	Dessert Reception <i>Sponsored by the Doris Duke Charitable Foundation</i>	Imperial Ballroom Foyer

Scientific Program

Sunday, April 26

Time	Event	Location
6:45 a.m. – 8:30 a.m.	Continental Breakfast	International Ballroom Foyer
7:00 a.m. – 10:00 a.m.	Registration	International Ballroom Foyer
8:00 a.m. – 8:15 a.m.	AAP Business Meeting	International Ballroom
8:15 a.m. – 9:00 a.m.	Kober Medal Presentation Chairs: Elliott Kieff, MD, PhD and Francis S. Collins, MD, PhD Acceptance of the Kober Medal for 2009 Recipient: Francois M. Abboud, MD <i>University of Iowa College of Medicine</i> Presenter: Michael Welsh, MD <i>University of Iowa College of Medicine</i>	International Ballroom
9:00 a.m. – 9:20 a.m.	Best Poster Awards Presentation Chairs: Nancy C. Andrews, MD, PhD and Elliott Kieff, MD, PhD	International Ballroom
9:20 a.m. – 10:20 a.m.	Kober Lecture Chairs: Elliott Kieff, MD, PhD and Francis S. Collins, MD, PhD Pursuing Cystic Fibrosis Michael Welsh, MD, <i>University of Iowa College of Medicine</i>	
10:20 a.m. – 11 a.m.	The ASCI Stanley J. Korsmeyer Award Lecture Presenter: Nancy C. Andrews, MD, PhD Transcriptional Regulation of Metabolism Mitchell A. Lazar, MD, PhD <i>University of Pennsylvania School of Medicine</i>	International Ballroom

Save The Date

The **ASCI/AAP** *Joint Meeting*

The Fairmont Chicago
April 23–25, 2010

Committee and Faculty

2009 ASCI/AAP Joint Meeting Planning Committee

Nancy C. Andrews, MD, PhD
ASCI President
Duke University Medical Center

Jonathan Epstein, MD
ASCI President-Elect
University of Pennsylvania
School of Medicine

Paul Mischel, MD
ASCI Vice President
David Geffen School of Medicine
at UCLA

Charles L. Sawyers, MD
ASCI Immediate Past President
Memorial Sloan Kettering Cancer Center

Elliott Kieff, MD, PhD
AAP President
Harvard University

Francis S. Collins, MD, PhD
AAP President-Elect
National Institutes of Health

Ralph I. Horwitz, MD
AAP Vice President
Stanford University Medical Center

Judith Swain, MD
AAP Immediate Past President
Singapore Institute for Clinical Sciences
University of California
San Diego School of Medicine

Program Faculty

Francois M. Abboud, MD
University of Iowa College of Medicine

Shizuo Akira, MD, PhD
Japan Science and Technology Agency

Nancy C. Andrews, MD, PhD
ASCI President
Duke University Medical Center

Nina Bhardwaj, MD, PhD
New York University School of Medicine

Howard Y. Chang, MD, PhD
Stanford University

Arul M. Chinnaiyan, MD, PhD
University of Michigan Medical School

George Daley, MD, PhD
Children's Hospital Boston

Elaine Fuchs, PhD
The Rockefeller University

Levi A. Garraway, MD, PhD
Harvard Medical School and
Dana-Farber Cancer Institute

William H. Hauswirth, PhD
University of Florida, Gainesville

Elliott Kieff, MD, PhD
AAP Vice President
Harvard University

Mitchell A. Lazar, MD, PhD
University of Pennsylvania School of Medicine

Michael T. Longaker, MD, MBA
Stanford School of Medicine

Ruslan Medzhitov, PhD
Yale School of Medicine

Amy Wagers, PhD
Harvard Medical School

Rob Wechsler-Reya, PhD
Duke University Medical Center

Michael Welsh, MD
University of Iowa College of Medicine

General Information

Faculty Disclosure

The Federation of American Societies for Experimental Biology (FASEB) requires that audiences at FASEB-sponsored educational programs be informed of a presenter's (speaker, faculty, author or contributor) academic and professional affiliation, and the existence of any significant financial interest or other relationship a presenter has with the manufacturer(s) of any commercial product(s) discussed in an educational presentation. When an unlabeled use of a commercial product or an investigational use not yet approved for any purpose is discussed during the presentation, it is required that presenters disclose that the product is not labeled for the use under discussion or that the product is still investigational. This policy allows the listener/attendeo to be fully knowledgeable in evaluating the information being presented.

Disclosure includes any relationship that may bias one's presentation or which, if known, could give the perception of bias. These situations may include, but are not limited to:

1. Stock options or bond holdings in a for-profit corporation or self-directed pension plan
2. Research grants
3. Employment (full- or part-time)
4. Ownership or partnership
5. Consulting fees or other remuneration
6. Non-remunerative positions of influence such as officer, board member, trustee or public spokesperson
7. Receipt of royalties
8. Speakers bureau
9. Other

For full-time employees of industry or government, the affiliation listed in this program will constitute full disclosure.

The following presenters have indicated a relationship that, in the context of their presentation, could be perceived by some as a real or apparent conflict of interest but do not consider that it will influence their presentation. The number following each company name represents the specific relationship from the list above. Disclosure information is printed exactly as submitted by the presenter. If a presenter is not listed, then he/she had no relationship to disclose. Disclosures from program committee members are also included.

Faculty Name	Disclosure
Arul M. Chinnaiyan	Gen-Probe – 9 (Consultant) Ventatna – 9 (Consultant)
Coller, Barry	Centocor – 7 Accumetrics – 5, 7 Novo Nordisk – 7
Daley, George	MPM Capital – 9 (Member-SAB) Epizyme – 9 (Member-SAB) Solasia – 9 (Member-SAB) Pierian – 9 (Member-SAB)
Hauswirth, William	AGTC Inc. – 9 (Co-Founder, Shareholder, Consultant)
Lazar, Mitchell A.	GlaxoSmithKline – 9 (Research Consultant)
Mischel, Paul	Cellfluidics, Inc. – 4 (Co-founder) N-of-One Therapeutics – 9 (Scientific Advisory Board)
Sawyers, Charles	Merck & Co Inc. – 9 (Consultant) Exelixis – 9 (Consultant)
Wagers, Amy	GlaxoSmithKline – 7 Merck – 7 IEK – 7 AVOS – 7 Novartis – 7
Welsh, Michael	Exemplar Genetics – 4 (Part owner)

Leadership

ASCI Officers

Nancy C. Andrews, MD, PhD

ASCI President

Duke University Medical Center

Jonathan Epstein, MD

ASCI President-Elect

University of Pennsylvania Medical School

Paul Mischel, MD

ASCI Vice President

University of California, Los Angeles,

David Geffen School of Medicine

Theresa A. Guise, MD

ASCI Secretary-Treasurer

University of Virginia

Laurence Turka, MD

Editor, The Journal of Clinical Investigation

University of Pennsylvania School of Medicine

ASCI Councilors

David Altshuler, MD, PhD

Harvard Medical School and Massachusetts General Hospital

Lynda Chin, MD

Dana-Farber Cancer Institute

Judy H. Cho, MD

Yale University School of Medicine

Elizabeth McNally, MD, PhD

University of Chicago Pritzker School of Medicine

Barbara Rehermann, MD

(Secretary-Treasurer Elect, 2009)

NIDDK, National Institutes of Health

Peter Tontonoz, MD, PhD

University of California, Los Angeles,

David Geffen School of Medicine

AAP Officers

Elliott Kieff, MD, PhD

AAP President

Francis S. Collins, MD, PhD

AAP President-Elect

National Institutes of Health

Ralph I. Horwitz, MD

AAP Vice President

Stanford University Medical Center

David Brenner, MD

AAP Secretary

University of California, San Diego

Timothy Ley, MD

AAP Treasurer

Washington University School of Medicine

AAP Councilors

Jack Elias, MD

Yale University School of Medicine

Warner C. Greene, MD, PhD

Gladstone Institute of Virology & Immunology

J. Larry Jameson, MD, PhD

The Feinberg School of Medicine

Gary Koretzky, MD, PhD

Abramson Family Cancer Research Institute/University of Pennsylvania

Richard P. Lifton, MD

Yale University School of Medicine

Elizabeth Nabel, MD

National Heart Lung and Blood Institute

Paul Rothman, MD

University of Iowa

ASCI/AAP Joint Meeting Travel Awardees

Jennifer Kim
Brown University

David T. Terrano
University of Arkansas for Medical Sciences

Suzanne R Thibodeaux
University of Texas Health Science

Michael A Valentino
Thomas Jefferson University

Frances Maria Saccoccio
Virginia Commonwealth University

A. Helena Jonsson
Washington University School of Medicine, St. Louis

Cecinio Ronquillo
University of Utah

Sandhya Ravichandran
University of Utah

Monica Walker
Washington University, St. Louis

Daniel Schneider
University of Utah

Meera Sridharan
Saint Louis University School of Medicine

Thanks to ASCI/AAP Joint Meeting Event Sponsors

Doris Duke Charitable Foundation

Dessert Reception, Poster Session

The University of Pennsylvania School of Medicine

Poster Session

The David Geffen School of Medicine at UCLA

Poster Session

The **ASCI/AAP** *Joint Meeting* **09**

Hotel Floor Plans

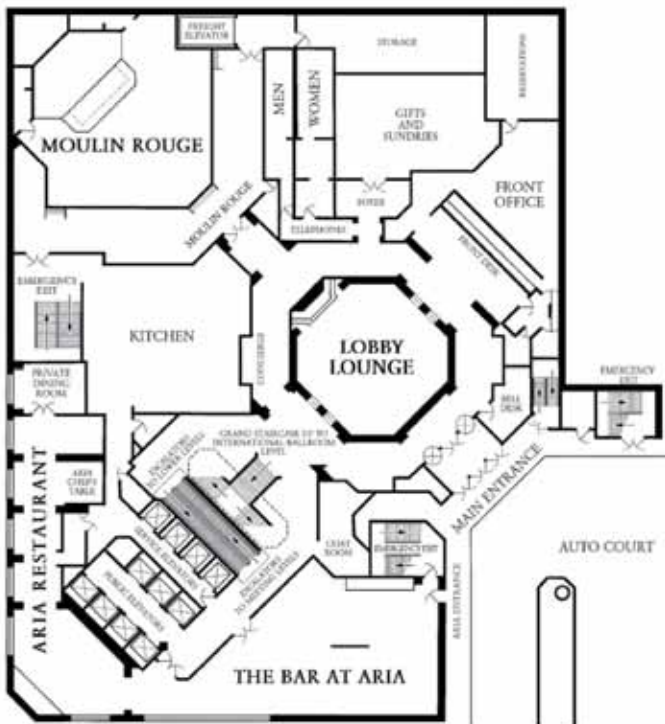
**International Ballroom Level
(2nd level)**



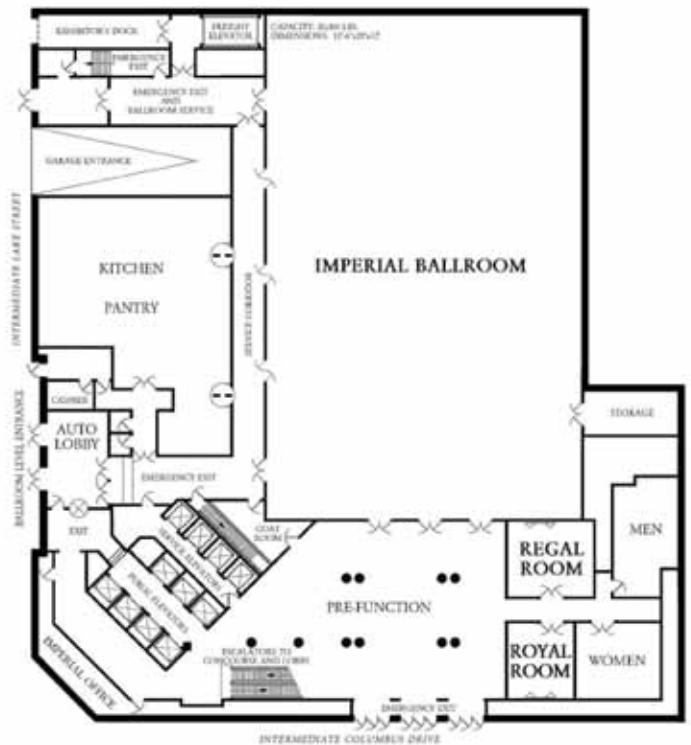
**Meeting Room Level
(3rd level)**



Lobby Level (1st level)



Imperial Ballroom Level (B2)



The ASCI/AAP *Joint Meeting*

111 Deer Lake Road,
Suite 100
Deerfield, IL 60015
www.jointmeeting.org
+1-847-480-9712

Corporate Supporters

The American Society for Clinical Investigation and the Association of American Physicians gratefully acknowledge the support of the following companies that made this program possible by providing unrestricted educational grants.

Benefactors

\$20,000 – \$50,000

BURROUGHS
WELLCOME
FUND 



Donors

\$10,000 – \$19,999

Lilly



Sponsors

\$2,000 – \$9,999


Affymetrix®

AMGEN®

Genentech
IN BUSINESS FOR LIFE

www.aap-online.org

www.the-asci.org



www.the-asci.org



www.aap-online.org

www.jointmeeting.org

The ASCI/AAP *Joint Meeting*

April 24 – 26, 2009

The Fairmont Chicago
Chicago, Illinois

09