

The ASCI/AAP *Joint Meeting*

08

APRIL 25-27, 2008
THE FAIRMONT CHICAGO
CHICAGO, ILLINOIS

**FINAL
PROGRAM**

AMERICAN SOCIETY FOR
CLINICAL INVESTIGATION
AND ASSOCIATION OF
AMERICAN PHYSICIANS



www.aap-online.org



www.the-asci.org

www.jointmeeting.org

The ASCI/AAP *Joint Meeting*

**WELCOME TO
CHICAGO!**



SPECIAL EVENTS

ASCI WELCOME RECEPTION AND ASCI ANNUAL DINNER FRIDAY, APRIL 25 6 – 9 P.M.

On Friday, April 25, at 6 p.m., the ASCI Welcome Reception brings together attendees of the ASCI/AAP 2008 Joint Meeting. This event will take place in the Imperial Ballroom foyer, and all attendees of the ASCI/AAP Joint Meeting are invited to attend. The ASCI Annual Dinner follows at 7 p.m. in the Moulin Rouge. Tickets are \$35, supply is limited.

The dinner will feature a talk titled, "???" presented by Jonathan Alter, Senior Editor of Newsweek.

AAP RECEPTION AND DINNER SATURDAY, APRIL 26 7 – 10 P.M.

On Saturday, April 26, the AAP Annual Reception and Dinner will be held in the Imperial Ballroom. The reception will begin at 7 p.m. in the Imperial Ballroom Foyer, followed by dinner at 8 p.m. Tickets for this exciting event are available for purchase at the Registration Desk, located in the International Foyer, until 5 p.m. on Saturday, April 26. Jeffrey R. Boehm, DVM, of the Shedd Aquarium, will present, "North America's Great Lakes-Navigating Science and Society Towards Great Lakes Conservation." This dinner is open to AAP membership and their guests only.



MEETING OBJECTIVES

This meeting is targeted to physician-scientists, research scientists, clinicians and medical education professionals. At the completion of this meeting, participants will be able to:

- Describe important recent advances in translational research and novel strategies to address some of the challenges to the clinical investigator
- Understand biomedical research advances with particular emphasis on their ability to improve medical care

OVERALL MEETING EVALUATION

The ASCI/AAP Joint Meeting Planning Committee needs your input to enhance future meetings. An online meeting evaluation survey will be e-mailed to you shortly after the Joint Meeting. Your participation in this survey is greatly appreciated.

CME INFORMATION

This activity has been planned and implemented in accordance with the Essential Areas and policies of the Accreditation Council for Continuing Medical Education (ACCME) through the joint sponsorship of the Federation of American Societies for Experimental Biology, ASCI and AAP.

The Federation of American Societies for Experimental Biology (FASEB) is accredited by the Accreditation Council for Continuing Medical Education to provide continuing medical education for physicians. FASEB and the ASCI/AAP Joint Meeting take responsibility for the content, quality, and scientific integrity of this continuing medical education activity.

FASEB designates this educational activity for a maximum of 8.5 *AMA PRA Category 1 Credit(s)*.™ Physicians should claim only credit commensurate with the extent of their participation in the activity.

You must submit your application for CME credits online at: <http://www.faseb.org/meetings/cmeactivities.htm>. After entering the site **you will need to input your Joint Meeting Member ID in order to complete the online application. You can find this number on your Joint Meeting confirmation and receipt.** There is a \$45 processing fee payable by credit card.

Questions regarding your continuing education credits should be directed to:

FASEB CME

Office of Scientific Meetings and Conferences

9650 Rockville Pike
Bethesda, MD 20814-3998 USA
Tel: 301-634-7010
Fax: 301-634-7014
Email: fasebcme@faseb.org

POSTER SESSIONS

The Poster Sessions are important educational events of this meeting. We hope you support and attend these scientific presentations. Posters can be viewed during the following times:

Poster Viewing

Friday, April 25	3:00 p.m. – 9:30 p.m.
Saturday, April 26	7:00 p.m. – 1:30 p.m.

Presenters are not required to be present at the viewing time.

Poster Presentation

Saturday, April 26	11:35 a.m. – 1:30 p.m.
--------------------	------------------------

Presenters are required to attend during the entire session.

Poster Dismantle

Saturday, April 26	1:30 – 2:00 p.m.
--------------------	------------------

POSTER SETUP

Poster setup is 1 – 3 p.m., Friday, April 25, in the Imperial Ballroom. Presenters should check in at the Registration Desk and then proceed to the Imperial Ballroom. Pushpins can be obtained at the Registration Desk. Posters must be removed immediately following the Saturday afternoon session at 1:30 p.m. Any posters left on the boards will be removed and may be picked up at the Registration Desk. Any posters not picked up by the end of the meeting will be discarded.

BEST POSTER AWARDS

Three Best Poster Awards will be awarded in the amount of \$1,000 each. Posters will be judged by council members of the ASCI and the AAP based on scientific novelty, quality and clarity of presentation. Awards will be presented on Sunday, April 27, at 9 a.m. in the International Ballroom.

ASCI MEMBERSHIP DESK

Visit the ASCI membership desk in the foyer of the International Ballroom for a list of new members, to pick up complimentary recent issues of *The Journal of Clinical Investigation*, and for general inquiries about membership.

AAP MEMBERSHIP DESK

Visit the AAP membership desk in the foyer of the International Ballroom. The AAP staff will be there to greet you and assist with your ballot.

REGISTRATION HOURS

Friday, April 25	1:00 p.m. – 7:00 p.m.
Saturday, April 26	7:00 a.m. – 5:00 p.m.
Sunday, April 27	7:00 a.m. – 10:00 a.m.

SCIENTIFIC PROGRAM

FRIDAY, APRIL 25

Time	Event	Location
1:00 p.m. – 3:00 p.m.	Poster Setup	Imperial Ballroom
1:00 p.m. – 7:00 p.m.	Registration	International Ballroom Foyer
2:30 p.m. – 3:00 p.m.	ASCI Business Meeting (All ASCI Members Welcome)	International Ballroom
3:00 p.m. – 4:00 p.m.	Young Investigator Reception	International Ballroom Foyer
4:00 p.m. – 6:00 p.m.	Opening Plenary Session Chairs: Charles L. Sawyers, MD, and Judith Swain, MD	International Ballroom
4:00 p.m. – 4:35 p.m.	Genetics of Autism and MRI Similarities and Differences Christopher Walsh, MD, PhD <i>Howard Hughes Medical Institute, BIDMC</i>	
4:35 p.m. – 5:10 p.m.	The Creating Brain: The Neuroscience of Genius Nancy Andreasen, MD, PhD <i>University of Iowa Hospitals and Clinics</i>	
5:10 p.m. – 6:00 p.m.	Stanley Center for Psychiatric Research: Status and Progress Edward Scolnick, MD <i>The Broad Institute of MIT and Harvard</i>	
3:00 p.m. – 9:30 p.m.	Poster Viewing	Imperial Ballroom
6:00 p.m. – 7:00 p.m.	ASCI Welcome Reception	Imperial Ballroom Foyer
7:00 p.m. – 9:00 p.m.	ASCI Annual Dinner Introduction of New Members ??? Jonathan Alter <i>Newsweek</i>	Moulin Rouge

SATURDAY, APRIL 26

7:00 a.m. – 5:00 p.m.	Registration	International Ballroom Foyer
7:00 a.m. – 8:00 a.m.	AAP Council Meeting (invited guests only)	Chancellor Room
7:00 a.m. – 8:15 a.m.	Mentoring Breakfast	Moulin Rouge
7:00 a.m. – 8:30 a.m.	Continental Breakfast	International Ballroom Foyer
7:00 a.m. – 1:30 p.m.	Poster Viewing	Imperial Ballroom
8:30 a.m. – 11:35 a.m.	Plenary Session: Genome-Wide Association Studies/Genetics of Complex Diseases Chairs: Nancy C. Andrews, MD, PhD and Elliott Kieff, MD, PhD	International Ballroom
8:30 a.m. – 9:10 a.m.	Genomic Variation and the Inherited Basis of Common Disease David Altshuler, MD, PhD <i>Harvard Medical School and Massachusetts General Hospital Broad Institute of Harvard and MIT</i>	
9:10 a.m. – 9:50 a.m.	Genome-Wide Association Studies in Crohn's Disease: Insight into Disease Judy H. Cho, MD <i>Yale University School of Medicine</i>	
9:50 a.m. – 10:15 a.m.	Break	International Ballroom Foyer
10:15 a.m. – 10:55 a.m.	Common Diseases: The Juxtaposition of Nature and Nurture Kári Stefánsson, MD, Dr. Med <i>deCODE Genetics</i>	
10:55 a.m. – 11:35 a.m.	Genetics of Hypertension: From Rare Patients to Common Pathways Richard P. Lifton, MD, PhD <i>Yale University School of Medicine</i>	
11:35 a.m. – 1:30 p.m.	Poster Session with Lunch	Imperial Ballroom

SCIENTIFIC PROGRAM

SATURDAY, APRIL 26

Time	Event	Location
1:30 p.m. – 3:30 p.m.	100th Birthday of ASCI – Breaking Science from the JCI Chairs: Nancy C. Andrews, MD, PhD and Elliott Kieff, MD, PhD	International Ballroom
1:30 p.m. – 1:45 p.m.	Session Introduction Laurence Turka, MD, JCI Editor in Chief <i>University of Pennsylvania</i>	
1:45 p.m. – 2:05 p.m.	Islet Transplantation in Autoimmune Diabetes Patients Induces Homeostatic Cytokines that Expand Autoreactive Memory T Cells Ezio Bonifacio, MD, PhD <i>Center for Regenerative Therapies Dresden Dresden University of Technology</i>	
2:05 p.m. – 2:25 p.m.	Angiogenesis-Driven Myocardial Hypertrophy Daniela Calipia Tirziu, PhD. <i>Dartmouth University</i>	
2:25 p.m. – 2:45 p.m.	Hedgehog Signaling is a Critical Regulator of the Coronary Vasculature Kory Lavine, MD PhD <i>Washington University</i>	
2:45 p.m. – 3:05 p.m.	Mechanisms of a Novel Autoimmunity Syndrome Caused by a Dominant Mutation in Aire Mark S. Anderson, MD, PhD <i>University of California, San Francisco</i>	
3:05 p.m. – 3:25 p.m.	Revealing Invisible Brain Pathology with Novel MRI Contrast Agents Daniel Anthony, MA, PhD <i>University of Oxford</i>	
3:30 p.m. – 3:45 p.m.	Break	International Ballroom Foyer
3:45 p.m. – 5:05 p.m.	ASCI and AAP New Member Presentations Chairs: Charles Sawyers, MD, and Judith Swain, MD	International Ballroom
3:45 p.m. – 4:05 p.m.	Glucocorticoid-Induced Osteoporosis in Children: Impact of the Underlying Disease Mary B. Leonard, MD, MSCE <i>The Children's Hospital of Philadelphia</i>	
4:05 p.m. – 4:25 p.m.	Trawling for Treasure: Tales of T-bet Laurie H. Glimcher, MD <i>Brigham and Women's Hospital</i>	
4:25 p.m. – 4:45 p.m.	The INK4/ARF Locus and Aging Norman Sharpless, MD <i>University of North Carolina Lineberger Comprehensive Cancer Center</i>	
4:45 p.m. – 5:05 p.m.	Human Disease Tissue Reveals Cytokine Targets for Therapy Marc Feldman, PhD <i>Kennedy Institute of Rheumatology The Charing Cross Hospital Campus</i>	
5:05 p.m. – 5:35 p.m.	ASCI Presidential Address ASCI: ??? Charles L. Sawyers, MD <i>Memorial Sloan Kettering Cancer Center, ASCI President</i>	International Ballroom
5:35 p.m. – 6:05 p.m.	AAP Presidential Address Our U.S.-Centric Focus: Lessons to be Learned from the British Empire Judith Swain, MD <i>Singapore Institute for Clinical Sciences University of California San Diego School of Medicine</i>	International Ballroom
7:00 p.m. – 10:00 p.m.	AAP Reception and Dinner North America's Great Lakes-Navigating Science and Society Towards Great Lakes Conservation Jeffrey R. Boehm, DVM Shedd Aquarium	Imperial Ballroom and Foyer

SCIENTIFIC PROGRAM

SUNDAY, APRIL 27

Time	Event	Location
7:00 a.m. – 11:00 a.m.	Registration	International Ballroom Foyer
6:45 a.m. – 7:45 a.m.	Mentoring Breakfast	Moulin Rouge
6:45 a.m. – 8:30 a.m.	Continental Breakfast	International Ballroom Foyer
7:00 a.m. – 7:45 a.m.	ASCI Institutional Representatives Retreat	Regent Room
8:00 a.m. – 8:15 a.m.	AAP Business Meeting	International Ballroom
8:15 a.m. – 9:00 a.m.	Kober Medal Presentation Wandering Chairs: Judith Swain, MD and Elliot Keff, MD, PhD Recipient: Samuel Thier, MD <i>Harvard Medical School</i> <i>Massachusetts General Hospital</i> Presenter: Dennis Ausiello, MD <i>Massachusetts General Hospital</i>	International Ballroom
9:00 a.m. – 9:20 a.m.	Best Poster Awards Presentation Chairs: Charles L. Sawyers, MD, and Judith Swain, MD	International Ballroom
9:20 a.m. – 10 a.m.	The ASCI Stanley J. Korsmeyer Award Lecture Presenter: Charles L. Sawyers, MD Cellular Mechanisms of Insulin Resistance: Implications for Type 2 Diabetes, Obesity and the Metabolic Syndrome Gerald I. Shulman, MD, PhD <i>Yale School of Medicine</i>	International Ballroom

The ASCI/AAP *Joint Meeting*

Save The Dates

THE FAIRMONT CHICAGO

APRIL 24–26, 2009

APRIL 23–25, 2010



COMMITTEE AND FACULTY

2008 ASCI/AAP JOINT MEETING PLANNING COMMITTEE

Charles L. Sawyers, MD
ASCI President
Memorial Sloan Kettering Cancer Center

Nancy C. Andrews, MD, PhD
ASCI President-Elect
Duke University Medical Center

Barbara Weber, MD
ASCI Immediate Past President
GlaxoSmithKline

Judith Swain, MD
AAP President
*Singapore Institute for Clinical Sciences
University of California
San Diego School of Medicine*

Elliott Kieff, MD, PhD
AAP Vice President
Harvard University

Dennis Ausiello, MD
AAP Immediate Past President
Massachusetts General Hospital

PROGRAM FACULTY

David Altshuler, MD, PhD
*Harvard Medical School and
Massachusetts General Hospital
Broad Institute of MIT and Harvard*

Mark S. Anderson, MD, PhD
University of California, San Francisco

Nancy Andreasen, MD, PhD
University of Iowa Hospitals and Clinics

Nancy C. Andrews, MD, PhD
ASCI President-Elect
Duke University Medical Center

Daniel Anthony, MA, PhD
*University of Oxford
Fellow of Somerville College and
University Lecturer*

Dennis Ausiello, MD
Massachusetts General Hospital

Ezio Bonafacio, MD, PhD
Dresden University of Technology

Judy H. Cho, MD
Yale University School of Medicine

Marc Feldman, PhD
*Kennedy Institute of Rheumatology
The Charing Cross Hospital Campus*

Laurie H. Glimcher, MD
*Brigham and Women's Hospital
Harvard Medical School*

Elliott Kieff, MD, PhD
AAP Vice President
Harvard University

Kory Lavine, MD, PhD
Washington University

Mary B. Leonard, MD, MSCE
The Children's Hospital of Philadelphia

Richard P. Lifton, MD, PhD
*Yale School of Medicine
Howard Hughes Medical Institute*

Charles L. Sawyers, MD
Memorial Sloan-Kettering Cancer Center

Edward Scolnick, MD
The Broad Institute of MIT and Harvard

Norman Sharpless, MD
*University of North Carolina
Lineberger Comprehensive Cancer Center*

Gerald Shulman, MD, PhD
*Yale University School of Medicine
Howard Hughes Medical Institute*

Kári Steffánsson, MD, Dr.Med
deCODE Genetics

Judith Swain, MD
*Singapore Institute for Clinical Sciences
Agency for Science, Technology and Research
(A*STAR)
National University of Singapore
University of California, San Diego*

Samuel Thier, MD
*Harvard Medical School
Massachusetts General Hospital*

Daniela Calipia Tirziu, PhD
Dartmouth University

Laurence Turka, MD, JCI Editor in Chief
University of Pennsylvania

Christopher Walsh, MD, PhD
*Harvard Medical School
Children's Hospital Boston
Howard Hughes Medical Institute at Beth
Israel Deaconess Medical Center*

GENERAL INFORMATION

FACULTY DISCLOSURE

The Federation of American Societies for Experimental Biology (FASEB) requires that audiences at FASEB-sponsored educational programs be informed of a presenter's (speaker, faculty, author or contributor) academic and professional affiliation, and the existence of any significant financial interest or other relationship a presenter has with the manufacturer(s) of any commercial product(s) discussed in an educational presentation. When an unlabeled use of a commercial product or an investigational use not yet approved for any purpose is discussed during the presentation, it is required that presenters disclose that the product is not labeled for the use under discussion or that the product is still investigational. This policy allows the listener/attendee to be fully knowledgeable in evaluating the information being presented.

Disclosure includes any relationship that may bias one's presentation or which, if known, could give the perception of bias. These situations may include, but are not limited to:

1. Stock options or bond holdings in a for-profit corporation or self-directed pension plan
2. Research grants
3. Employment (full- or part-time)
4. Ownership or partnership
5. Consulting fees or other remuneration
6. Non-remunerative positions of influence such as officer, board member, trustee or public spokesperson
7. Receipt of royalties
8. Speakers bureau
9. Other

For full-time employees of industry or government, the affiliation listed in this program will constitute full disclosure.

The following presenters have indicated a relationship which, in the context of their presentation, could be perceived by some as a real or apparent conflict of interest but do not consider that it will influence their presentation. The number following each company name represents the specific relationship from the list above. Disclosure information is printed exactly as submitted by the presenter. If a presenter is not listed, then he/she had no relationship to disclose. Disclosures from program committee members are also included.

Faculty Name	Disclosure
Ausiello, Dennis	Pfizer – 9 (Director) Micro Chips – 9 (Director)
Glimcher, Laurie H.	Bristol-Myers Squibb – 9 (Director) Merck & Co. Inc. – 9 Waters Corporation – 9 (Director)
Scolnick, Edward	Merck & Co. Inc. – 1 (Stock Owner) Milipod – 6 (Board Member)
Stefánsson, Kári	deCODE – 3 (CEO)
Sawyers, Charles L.	Merck & Co Inc. – 9 (Consultant) Exelixis – 9 (Consultant)
Swain, Judith	Singapore Agency for Science and Technology – 3 (Swain and spouse) GlaxoSmithKline – 9 (spouse)(SAB) Lexicon – 6
Weber, Barbara	GlaxoSmithKline – 3

LEADERSHIP

ASCI OFFICERS

Charles L. Sawyers, MD
President
Memorial Sloan-Kettering Cancer Center

Nancy Andrews, MD, PhD
President-Elect
Duke University Medical Center

Jonathan A. Epstein, MD
Vice President
University of Pennsylvania Medical School

Theresa A. Guise, MD
Secretary-Treasurer
University of Virginia

Laurence Turka, JCI Editor in Chief
University of Pennsylvania

ASCI COUNCILORS

David Altshuler, MD, PhD
Massachusetts General Hospital

Lynda Chin, MD
Dana-Farber Cancer Institute

Harry C. Dietz III, MD
Johns Hopkins University School of Medicine

T. Jake Liang, MD
NIDDK, National Institutes of Health

Jonathan D. Licht, MD
Northwestern University

Elizabeth McNally, MD, PhD
University of Chicago

AAP OFFICERS

Judith Swain, MD
President
*Singapore Institute for Clinical Sciences Agency for Science,
Technology and Research (A*STAR)
National University of Singapore
University of California, San Diego*

Elliott Kieff, MD, PhD
Vice President
Channing Laboratory

David Brenner, MD
Secretary
*Columbia University, College of Physicians and Surgeons at
Presbyterian Hospital*

Craig Thompson, MB, ChB, DPhil
Treasurer
University of Pennsylvania

AAP COUNCILORS

Francis Collins, MD
National Human Genome Research Institute

Jack Elias, MD
Yale University School of Medicine

Warner C. Greene, MD, PhD
*Gladstone Institute of Virology & Immunology
University of California, San Francisco*

Ralph Horwitz, MD
Stanford University

J. Larry Jameson, MD, PhD
Northwestern University School of Medicine

Timothy Ley, MD
Washington University School of Medicine

Richard D. Lifton, MD
Yale University School of Medicine

ASCI/AAP JOINT MEETING TRAVEL AWARDEES

Roger De Filippo

Children's Hospital Los Angeles

Vandana Menon

Tufts-New England Medical Center

Arno Tilles

Massachusetts General Hospital

Arjang Djamali

University of Wisconsin, Madison

Terumi Midoro-Horiuti

University of Texas Medical Branch

Natalie Torok

University of California, Davis

Pietro Galassetti

University of California Irvine

Susmita Parashar

Emory University

Y. Lynn Wang

Weill Cornell Medical College

Tzung Hsiai

University of Southern California

Madhumathi Rao

Tufts-New England Medical Center

Zili Zhang

Oregon Health & Science University

John Kao

University of Michigan

Shenandoah Robinson

Case Western Reserve University

Julie Lin

Harvard Medical School

Samuel Shelburne

Baylor College of Medicine



THE ASCI IS PLEASED TO RECOGNIZE THE FOLLOWING RECIPIENTS OF THE SOCIETY'S 2008 YOUNG INVESTIGATOR AWARDS:

David J. Beckham, MD

University of Colorado at Denver and Health Sciences Center

Project title: Mechanisms of Apoptosis in Virus-Infected Neurons

Marion Hofmann, MD, PhD

The University of Chicago

Project title: Pro-inflammatory S100A12 in atherosclerosis and acute coronary syndrome

Tae-Hwa Chun, MD, PhD

University of Michigan Medical School

Project title: 3-Dimensional Proteolytic Regulation of Adipose Tissue Development and Function

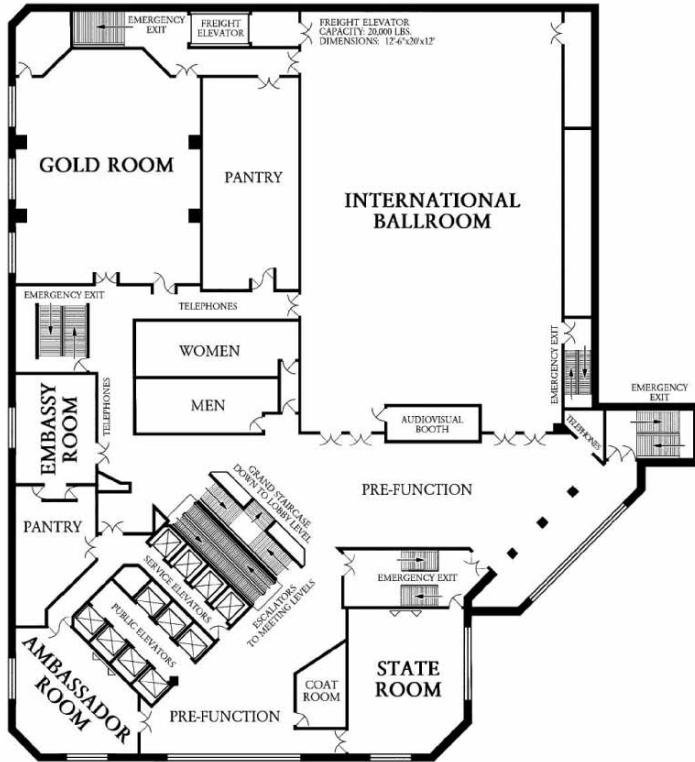
Johannes S. Schlondorff, MD, PhD

Brigham and Women's Hospital

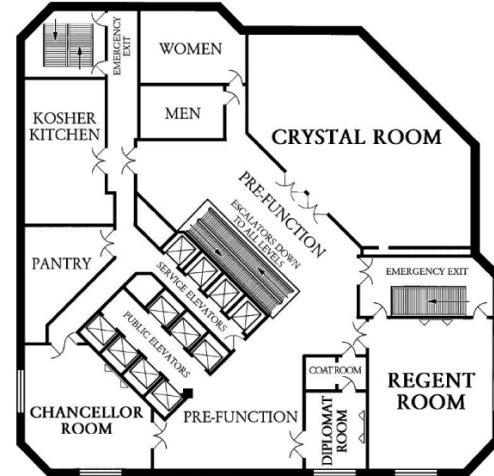
Project title: TRPC6 Regulation and its Role in Glomerular Pathobiology

HOTEL FLOOR PLANS

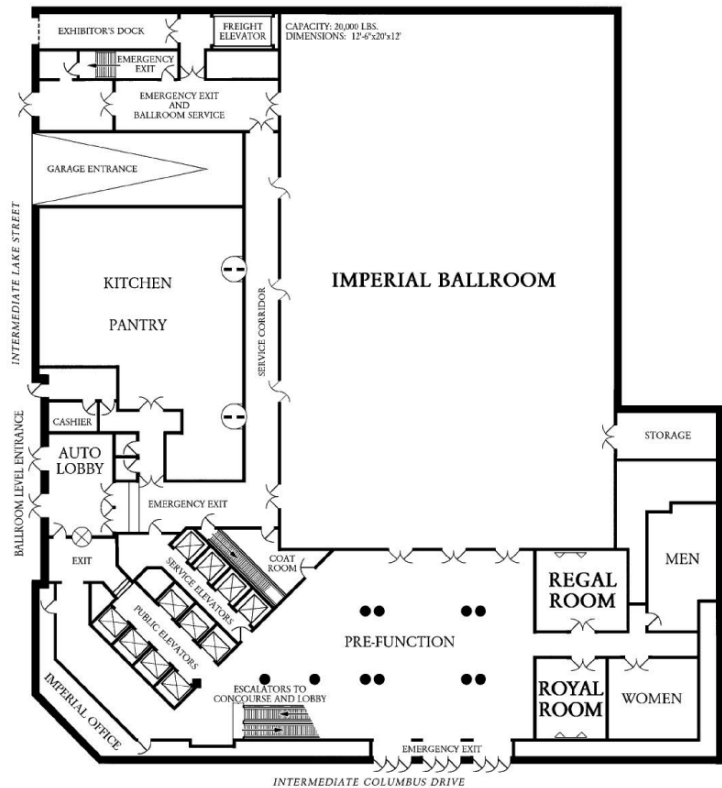
INTERNATIONAL BALLROOM LEVEL (2ND LEVEL)



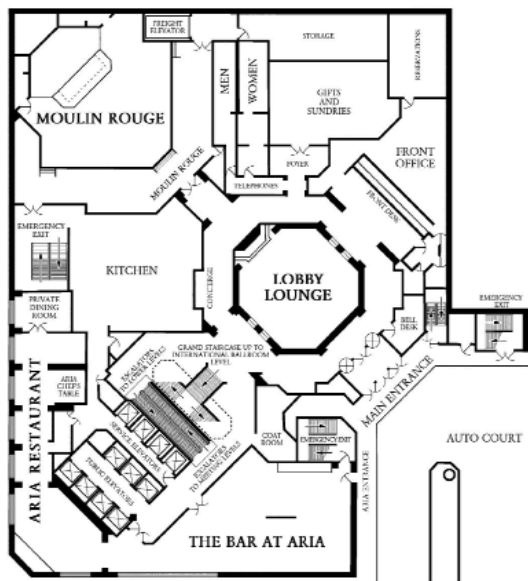
MEETING ROOM LEVEL (3RD LEVEL)



IMPERIAL BALLROOM LEVEL (B2)



LOBBY LEVEL (1ST LEVEL)



The **ASCI/AAP** *Joint Meeting*

111 DEER LAKE ROAD,
SUITE 100
DEERFIELD, IL 60015
WWW.JOINTMEETING.ORG

CORPORATE SUPPORTERS

The American Society for Clinical Investigation and the Association of American Physicians gratefully acknowledge the support of the following companies that made this program possible by providing unrestricted educational grants.

BENEFACTORS

\$20,000 – \$50,000



SPONSORS

\$2,000 – \$10,000



www.aap-online.org



www.the-asci.org

www.jointmeeting.org

The **ASCI/AAP** *Joint Meeting*

APRIL 25–27, 2008

THE FAIRMONT CHICAGO
CHICAGO, IL

08